

Monkey Dos/Don'ts

Here's what to do or not to do:

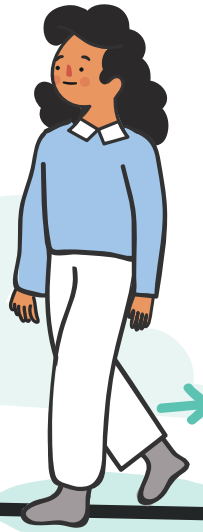
✓ **Do** remain calm and quiet while in the open. Observe them from a distance.

✗ **Don't** make sudden movements.



✓ **Do** back off slowly.

✗ **Don't** turn away from the monkeys and run.



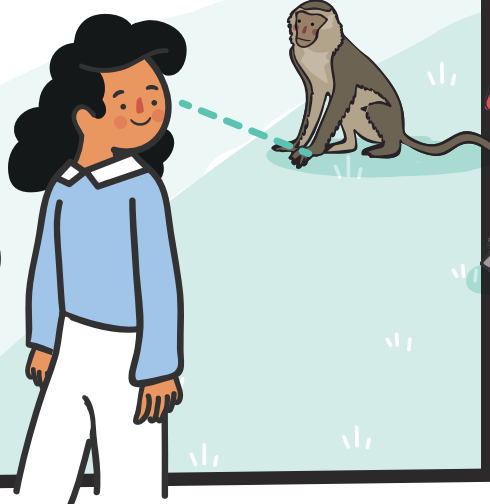
✓ **Do** keep food out of sight. Monkeys have associated plastic bags with food, so these should be kept out of sight or they may snatch it.



✗ **Don't** use flash photography. This can upset the monkey and may cause it to turn aggressive.



✗ **Don't** make direct eye contact with the monkey.



✗ **Don't** feed the monkeys. Monkeys used to feeding can become aggressive and snatch food from you. Feeding monkeys reduces their natural inclination to forage in the forest.

