

FIND OUT ABOUT YOUR RESIDENT PROFILE

As residents, we have different views on the level of satisfaction with municipal issues in our neighbourhoods, and our willingness to be involved individually or as part of our community to resolve these issues.

From the Municipal Services Office (MSO)'s 2023 Resident Archetypes study, we surveyed more than 1,000 residents and designed 4 resident profiles - Champion Charlie, Neutral Nancy, Tolerant Tina and Quiet Quinn based on their level of satisfaction on municipal issues and their willingness to resolve these issues either individually or as part of their community. Their descriptions are shown below.

CHAMPION CHARLIE



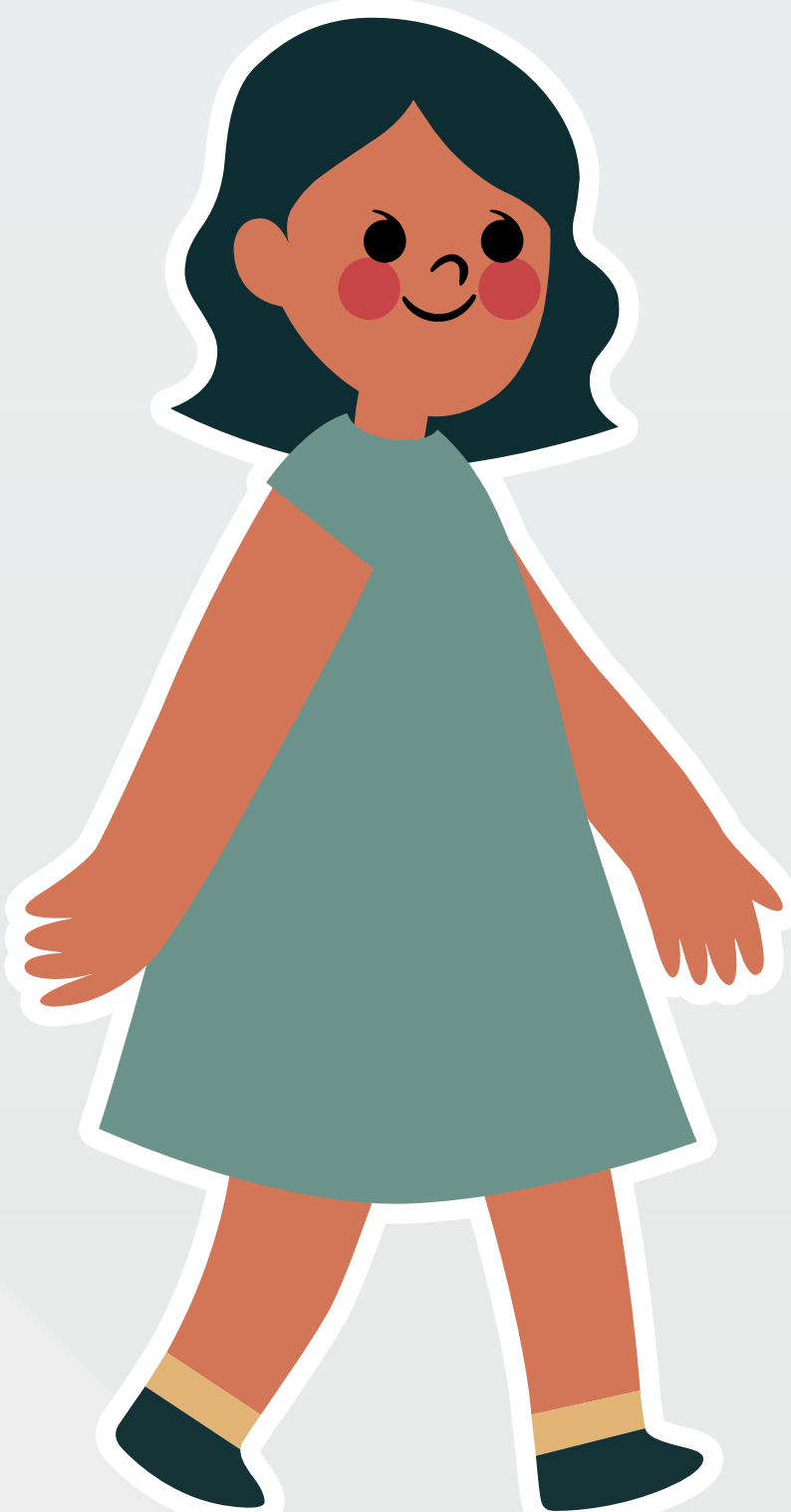
You frequently take charge of resolving problems with neighbours personally and are actively involved in your community! You can extend your positive influence through leading and championing initiatives which could improve your neighbourhood.

NEUTRAL NANCY



You are quite involved with your community, and usually take the first step to resolve municipal issues with your neighbours. You are prepared to play an active role to build a better living environment.

TOLERANT TINA



You tend to be accommodating when it comes to municipal issues that you encounter. You prefer to join and work with other people who are managing the issues.

QUIET QUINN



You may not be very involved in your community to upkeep your neighbourhood. When affected by municipal issues, you tend to work on your own to resolve them.



Try our resident profiling tool by answering 7 simple questions on the touchscreen television on the right to find out your profile. Alternatively, you could also access the questions via <https://go.gov.sg/profiling-tool>

More information on MSO's study findings can be found on: <https://go.gov.sg/mso-archetypes>

